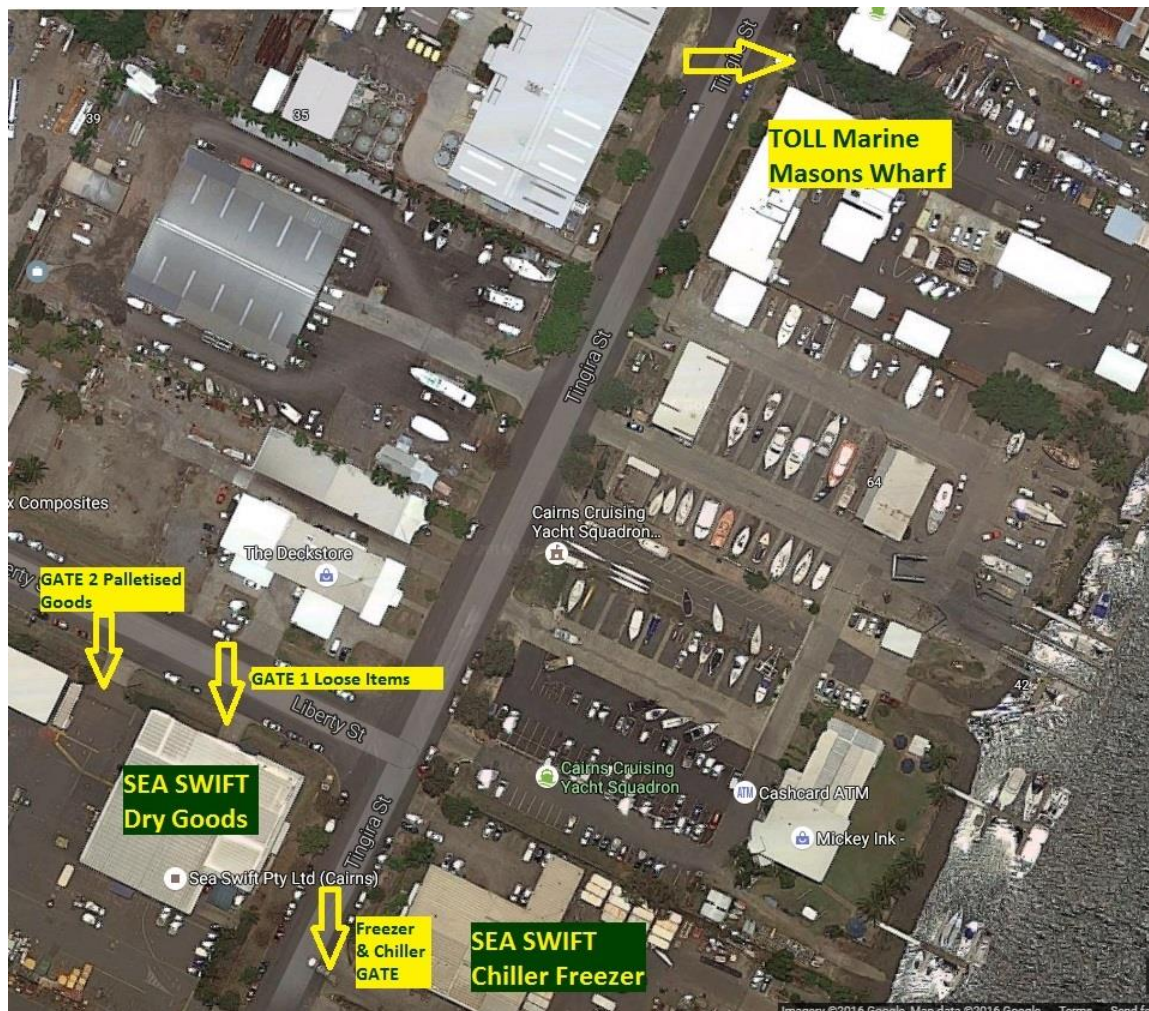


keeping north queensland connected

The time is finally here!

Toll Marine Logistics are sailing for the last time Friday 12th August. Sea Swift will be carrying all freight ex Cairns from this date. To ensure everyone is aware of what is required all freight is to be dropped to Sea Swift's Cairns Depot. The map below shows Sea Swift's Depot in relation to TML's current Depot in Cairns (Mason's Wharf).



Please ensure you are familiar with the various drop off locations for freight at Sea Swift's Cairns Depot.

keeping north queensland connected

To ensure all freight is received on time to meet the required voyages, below are the freight receival acceptance times broken down by community. To avoid disappointment please ensure freight is dropped off as early as possible. Should freight be received after freight acceptance closure we cannot guarantee freight will travel on the required voyage.

<u>Communities</u>	<u>Dangerous Goods</u>	<u>Dry</u>	<u>Freezer</u>	<u>Chiller</u>
Horn, TI, NPA, Lockhart River. Weipa (essentials only). OTSI Ports: Badu/Mulgrave, Kubin/Moa.	BULK DG in ISO containers direct to Wharf 8 Tue 08:00 BULK DG Friday 08:00 unless otherwise advised Limited quantity DG as per dry receival dates.	MON: 7:40am till 4pm FRI: 11:00am till 4pm	MON: 6am till 2pm	MON: 6am till 2pm
Horn, TI, Weipa. NPA (essentials only). OTSI PORTS - Boigu, Coconut/Poruma, Darnley/Erub, Dauan, Hammond, Mabuiag, Murray/Mer, Saibai, St Pauls/ Moa, Warraber/Sue, Yam/Iama, Yorke/Masig *Stephen/Ugar	BULK Dangerous Goods in ISO containers direct to Wharf 8 on Tuesday 08:00 BULK Dangerous Goods Friday 08:00 Unless otherwise advised limited quantity DG as per dry receival dates.	WED: 7:40am till 4pm THU: 7:40am till 4pm *WED 24th AUGUST 7:40am till 4pm *THU 25th AUGUST 7:40am till 4pm	WEDNESDAY: 6am till 2pm *WED 24th AUGUST 6am till 2pm	THURSDAY: 6am till 2pm *THU 25th AUGUST 6am till 2pm

To ensure TML customers have:

- As smooth a transition as possible; and
- To ensure continuity moving forward;

Ms. Suzanne Jia has accepted a role working with Sea Swift commencing Monday 22nd August. We welcome Suzanne aboard and look forward to providing a seamless transition for all concerned.

For all customer/supplier enquiries and/or to open an account please contact the Customer Service team on **1800 424 422** or email sales@seaswift.com.au.

We look forward to working with you to ensure we keep North Queensland connected.